

IV

Die d. im langsamen Marschtakt.

The image shows a musical score for three staves in bass clef, 3/4 time signature. The first staff begins with the instruction *espr.* and contains a melodic line with various intervals and accidentals. The second staff continues the melody, featuring a first ending bracket labeled '1' over a specific measure. The third staff concludes the piece with a final melodic phrase. The key signature has one sharp (F#) and the time signature is 3/4.

Violoncello

2



3



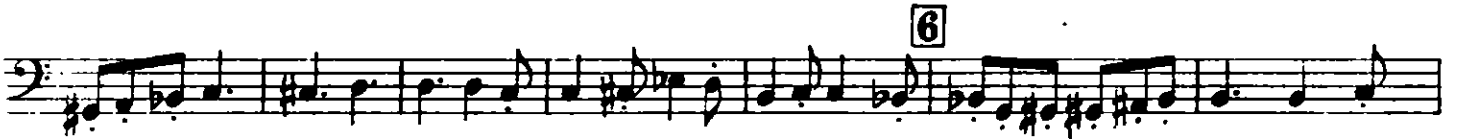
4



5



6



7



8



9



10



11



rit.

