

## VI. STREICHQUARTETT

Violoncello

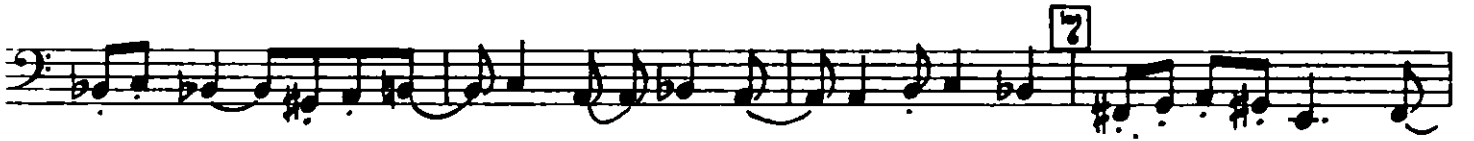
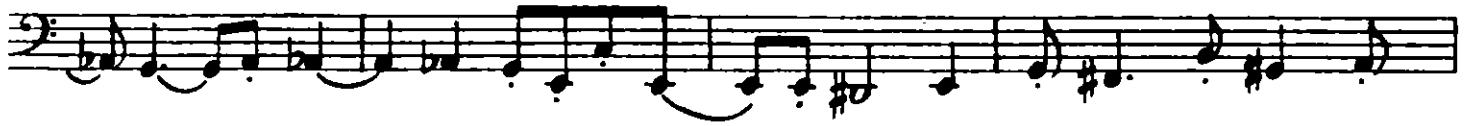
Josef Matthias Hauer, op. 47

## I

*Die im Jazzschritt (nicht schnell)*

Anmerkung. Diese Stimmen sind zugleich die Streicherstimmen der VI. Suite op. 47 für Orchester. In der Orchestersuite spielen überdies die kleine und große Flöte aus der Stimme der I. Violine, Fagott, Kontrafagott und Kontrabaß spielen aus der Cellostimme. Die Versetzungszeichen gelten stets, auch innerhalb der Taktstriche, nur für die Noten, vor denen sie stehen.

# Violoncello



## II

*Langsam.*



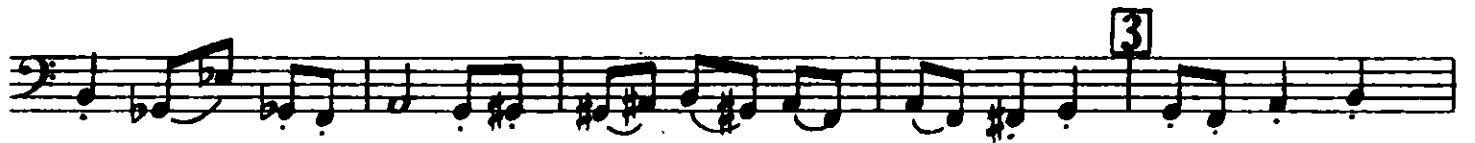
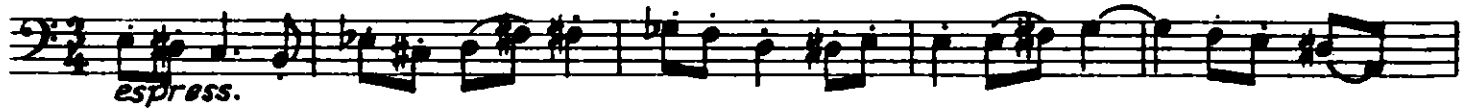
# Violoncello

This musical score for Violoncello consists of 11 numbered measures. The notation is in bass clef with a key signature of one flat (B-flat). Measure 3 begins with a triplet of eighth notes. Measure 4 continues with eighth notes and a half note. Measure 5 features a triplet of eighth notes. Measure 6 contains a triplet of eighth notes and a half note. Measure 7 has a triplet of eighth notes and a half note. Measure 8 is a triplet of eighth notes. Measure 9 consists of eighth notes. Measure 10 continues with eighth notes. Measure 11 concludes with a half note and a fermata, marked with the instruction *rit.*

# Violoncello

## III

Die  $\downarrow$  im Walzerschritt (nicht schnell)



Violoncello

Musical score for Violoncello, measures 7 through 11. The score is written in bass clef with a key signature of one sharp (F#). Measure 7 is marked with a boxed '7'. Measure 8 is marked with a boxed '8'. Measure 9 is marked with a boxed '9'. Measure 10 is marked with a boxed '10'. Measure 11 is marked with a boxed '11'. The music consists of eighth and sixteenth notes, some beamed together, with various accidentals. The final measure (11) ends with a double bar line and a fermata over the final note.

IV

Die J. im langsamen Marschtakt.

Musical score for Violoncello, measures 12 through 14. The score is written in bass clef with a key signature of one sharp (F#) and a 6/8 time signature. Measure 12 is marked with 'espr:'. Measure 13 is marked with a boxed '1'. Measure 14 is the final measure of this section, ending with a double bar line and a fermata over the final note.

# Violoncello

2



3



4



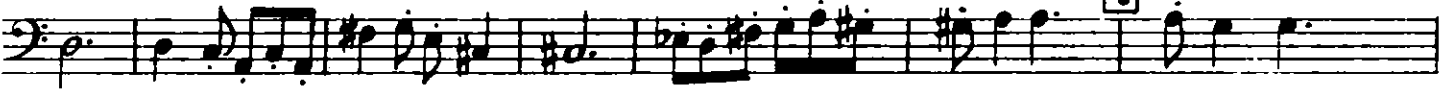
5



6



7



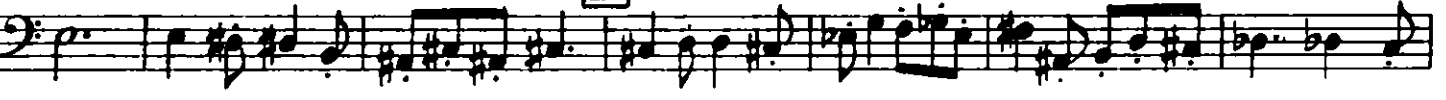
8



9



10



11



*rit.*

